

LMM

Laser Marking



Specifications

Configuration

- Size: 1600mm x 900mm x 1700mm (L x W x H)
- Weight: Approx.1500kg

Computer Specification

- CPU: Pentium Core 2 Duo or greater
- Operating System: Window 10

Interfaces

- Operator Computer Interface: 17" LCD
- Factory Network Connection: Ethernet (TCP/IP)

Power and Facilities Requirements

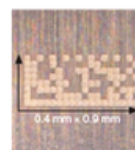
- Electrical: 230-240V (Three Phase), 50-60Hz
- Main MCB: 16A
- Compressed Air: CDA 5-6 bar

Marking Size and Samples

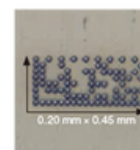
- Smallest Alphanumeric Marking: 0.1mm Character Height
- Smallest 2D Barcode (14 Alphanumeric): 0.2mm x 0.8mm

Laser Marking Capabilities

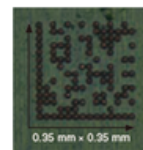
- Copper/ Stainless Steel/ Glass Epoxy/ Ceramic/ Compound Molding



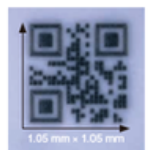
Copper



Stainless Steel



Glass Epoxy



Ceramic

- Up to 110,000 UPH
- Magazine/ Reel/ Stacker/ Tray Input
- Magazine/ Reel/ Stacker/ Tray Output
- Laser Option: Fiber/ Green/ UV
- No. of Laser Head: Single Head
- Vision: Position Compensation/ Post Mark

- Frame Size Up to 300mm x 100mm

